



GEORGIA TRAFFIC SAFETY QUICK FACTS: DRIVERS AGED 55+ YEARS

WHAT YOU SHOULD KNOW

Drivers aged 55 and older are more likely to have **safe driving habits**, such as wearing seat belts and limiting their driving at night. However, they may be **more vulnerable** in traffic crashes because of the fragility that aging brings.

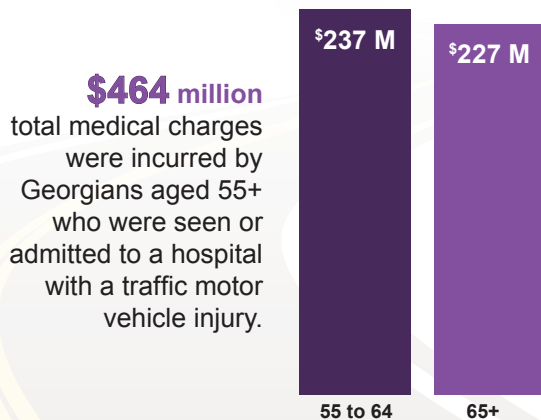
THE NUMBERS

In 2020...

621 drivers 55+ were involved in a **fatal motor vehicle crash*** – of these drivers, **300** died.



1 in **5** drivers aged 65+ in a serious injury crash involved a **left hand turn** maneuver.



5% INCREASE # of 55+ drivers involved in fatal crashes



REDUCE YOUR RISK



**DRIVE ALERT
STAY FOCUSED**



**MANAGE
YOUR
MEDICATIONS**



**WEAR YOUR
SEATBELT**



**BE AWARE
OF PHYSICAL
AND MENTAL
CHANGES**

FACTORS THAT CONTRIBUTE TO CRASHES INVOLVING AGING DRIVERS

- Failure to yield
- Not maintaining a safe following distance
- Changing lanes improperly
- Reaction to object or animal
- Misjudging clearance



PREVENTION MEASURES

Be Aware, aging can impact your drivingskills:

- Have your vision checked, ask your doctor how medical conditions affect your driving.
- Review medications with your doctor or pharmacist.

Be proactive about your safe driving skills:

- Enroll in a driver safety course.
- Attend a CarFit safety event.
- Complete a self-assessment of your driving skills.

Plan a safe & active transition from driving:

- Learn the alternative transportation options in your community.
- If you're concerned about someone's driving, learn how to talk to them.
- Visit your local Area Agency on Aging for these resources and more.

*Fatal motor vehicle crashes are traffic crashes that resulted in at least one fatality.



2020 QUICK FACTS

Population

The population of Georgians aged **55+** years **increased** by **12%** from 2016 to 2020 and represented 33% of the total Georgia population in 2020. Overall, the 85+ population is expected to triple by 2050.

Drivers

- In 2020, there were **2.9 million** licensed drivers **55+** years of age – involved in 19% of all crashes and 26% of fatal crashes.
- Compared to all other age groups involved in a fatal crash, **drivers aged 65+** had the **highest fatality rate per 100,000 crashes**, yet the **lowest rate per 100,000 licensed drivers** -- suggesting they are safe drivers, but more vulnerable to fatal injury when involved in a crash.

Traffic Fatalities and Injuries

There were 522 fatalities and over 17,000 Georgia residents aged 55+ years were either seen or admitted to a hospital for a motor vehicle occupant injury — accounting for **31% of all traffic fatalities**, **16% of all ER visits**, and **32% of all hospitalizations**.

RESOURCES

55+ Driver Safety Program supports the safe mobility of drivers ages 55 and up. Resources include educational, environmental, and policy interventions through collaborative partnerships: road design with engineers, CarFit events (car-fit.org), the Yellow Dot Program, and custom presentations to communities and their leaders. dph.georgia.gov/ODS

MyCarDoesWhat explains how to best utilize new vehicle safety technologies to reduce the severity of crashes by providing useful tips on managing car safety. mycardoeswhat.org

Project Independence assists people 55 years and older experiencing vision loss or a combined vision and hearing loss. Administered by the Georgia Vocational Rehabilitation Agency they also provide mobility training by certified instructors. gvs.georgia.gov/project-independence

Georgia Department of Human Services Division of Aging Services

supports older individuals, at-risk adults, persons with disabilities, their families and caregivers to achieve safe, healthy, independent and self-reliant lives. aging.georgia.gov/about-us

Seat Belt Use

- **35%** of fatally injured, **male** occupants aged 65+ years were unrestrained compared to **18%** of **female** occupants.
- **15%** of seriously injured drivers 65+ years were unrestrained and **21%** of seriously injured passengers 65+ years were unrestrained

Other People Involved

Motorcyclists

About **1 in 5** of all motorcycle operator fatalities were riders aged 55+ years.

Pedestrians

38% of all pedestrian fatalities were among persons aged 55+ years. Considering the age distribution of Georgia's population, this age group is overrepresented in pedestrian fatalities.



For more information and resources related to safe driving among 55+ drivers:
<https://www.gahighwaysafety.org/georgia-traffic-safety-facts/>

