



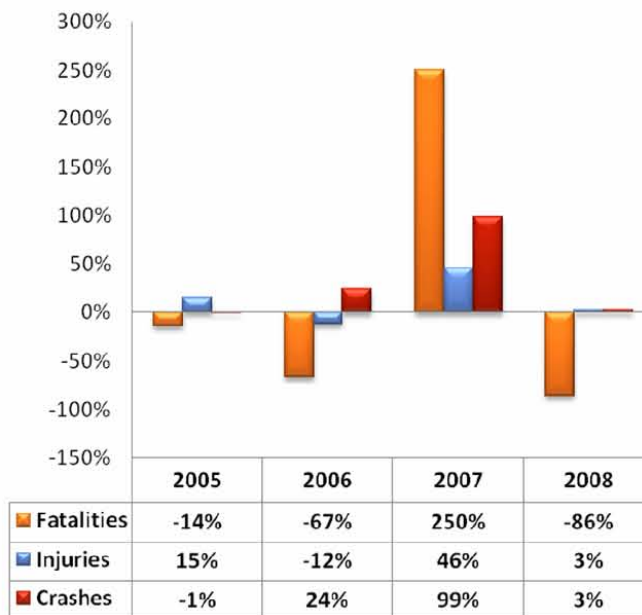
GEORGIA

TRAFFIC SAFETY FACTS

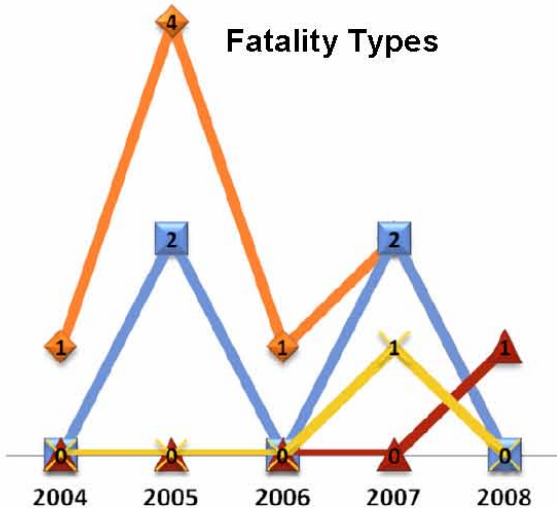
Pierce County

TYPE	2004	2005	2006	2007	2008
Fatalities	7	6	2	7	1
Injuries	126	145	127	185	191
Crashes	143	142	176	350	362

Percent Change from Previous Year



Fatality Types



2008 Fatality by Restraint Use

Person killed was not in a passenger car.

- ◆ Alcohol-Impaired Driving (BAC=.08+) Fatalities
- Speeding Involved Crash Fatalities
- ▲ Motorcyclist Fatalities
- ★ Pedestrian Fatalities

Passenger Vehicles Include Light (P/U) Trucks & Passenger Cars