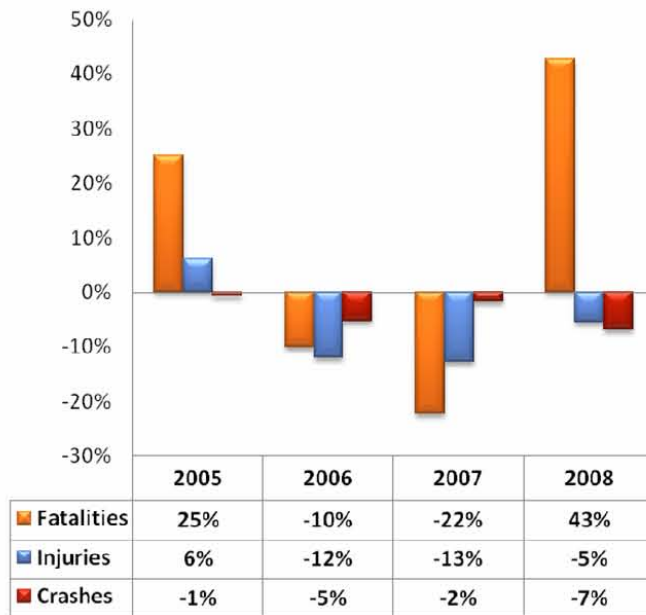


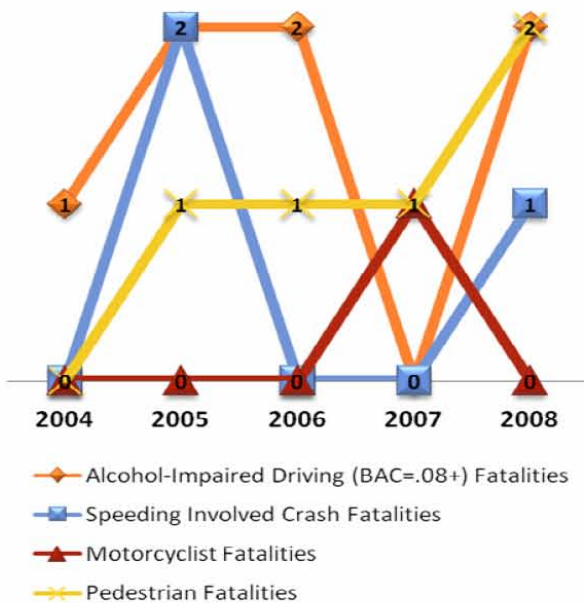
### Monroe County

TYPE	2004	2005	2006	2007	2008
Fatalities	8	10	9	7	10
Injuries	406	431	379	331	313
Crashes	966	959	908	892	831

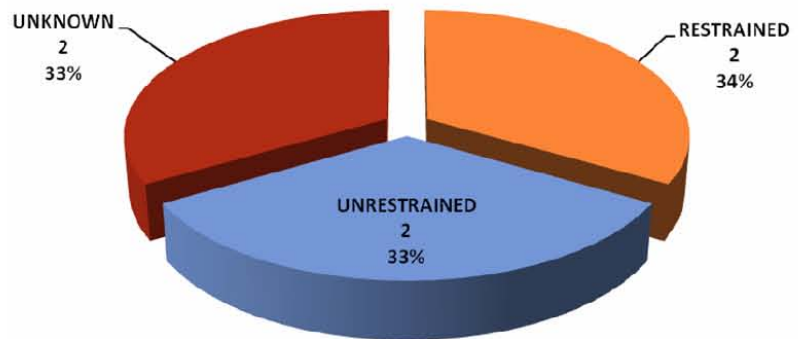
Percent Change from Previous Year



Fatality Types



2008 Fatality by Restraint Use



Passenger Vehicles Include Light (P/U) Trucks & Passenger Cars