



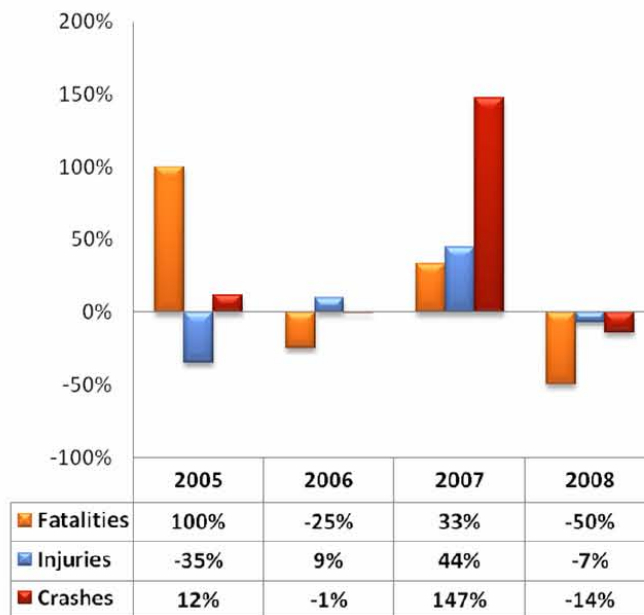
GEORGIA

TRAFFIC SAFETY FACTS

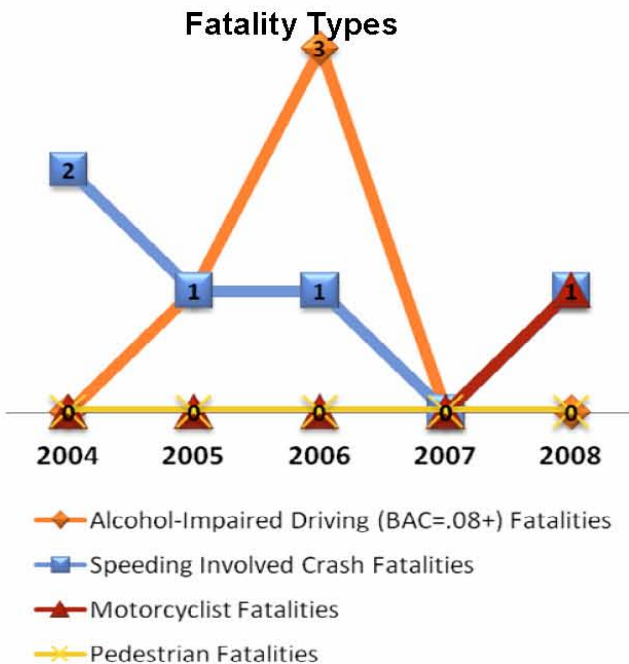
Jasper County

TYPE	2004	2005	2006	2007	2008
Fatalities	2	4	3	4	2
Injuries	113	74	81	117	109
Crashes	133	149	148	366	314

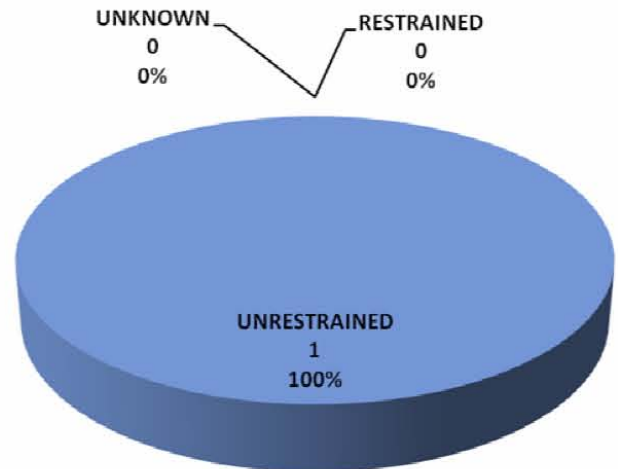
Percent Change from Previous Year



Fatality Types



2008 Fatality by Restraint Use



Passenger Vehicles Include Light (P/U) Trucks & Passenger Cars