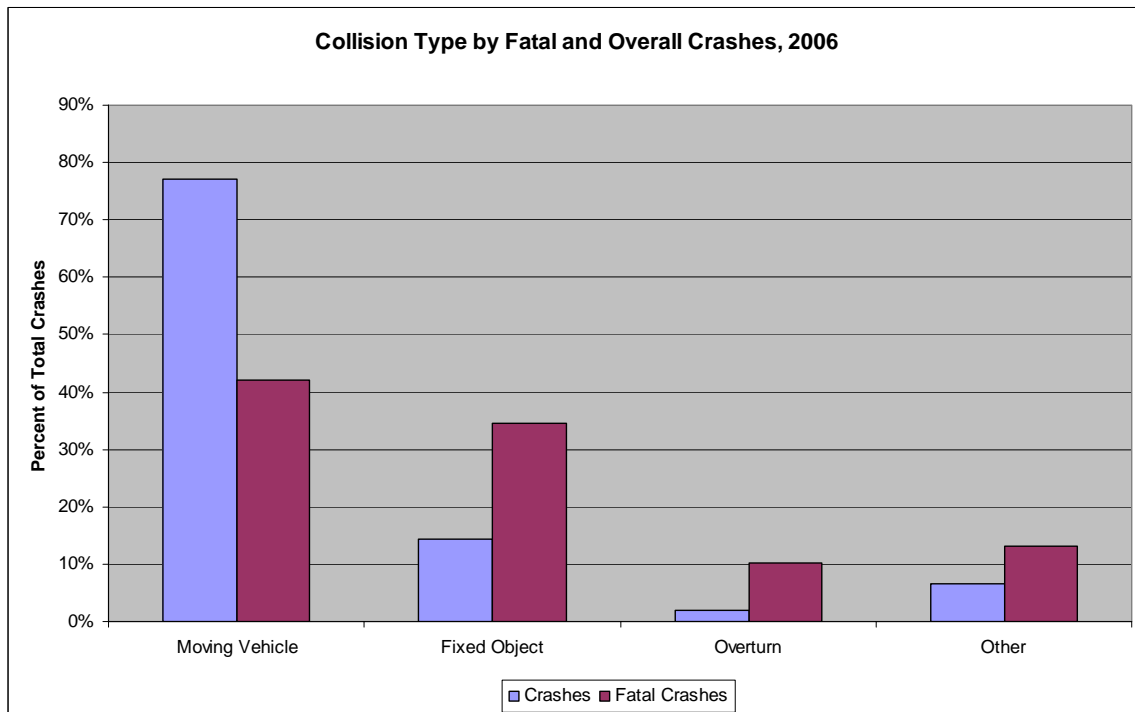


Collision Type

In 2006, fixed object crashes accounted for 34.6% of fatal crashes, although they represented only 14.4% of overall crashes. Additionally, non-collision crashes where a vehicle overturned represented 10.3% of fatal crashes while only accounting for roughly 2% of overall crashes.

Collision with a moving vehicle or a fixed object, or non-collision overturn crashes accounted for 93.4 percent of motor vehicle crashes in 2006.



Collisions with trees were the second most common fatal crash type in 2006, followed closely by overturned vehicle.

Although motor vehicle collisions with deer was the second most common overall crash type, these crashes only accounted for four fatal crashes in 2006.

Crash Type, by Year (All Crashes)							
Type of Crash	2000	2001	2002	2003	2004	2005	2006
Motor Vehicle in Motion	237845	245721	252738	255008	263094	266698	263457
Deer	9901	10565	9609	10343	9930	10110	10092
Parked Motor Vehicle	8214	7832	8612	9123	9370	8679	8477
Ditch	6960	6819	7654	7952	8062	8085	7307
Tree	5927	5983	6324	6824	7228	7100	6477
Overturn	4986	4919	4963	4692	5475	5624	6447
Other Object (Not Fixed)	2582	3036	2975	3064	3244	3903	4060
Other Fixed Object	3991	3526	4155	3711	3642	3782	3754
Utility Pole	3146	3118	3215	3130	3172	3299	3124
Embankment	3361	3216	3341	3171	3371	3323	3052
Other Non-Collision	2082	2666	2310	2671	3382	3066	2798
Guardrail Face	2598	2399	2769	2707	2929	3153	2728
Curb	2190	2260	2675	2484	2657	2743	2690
Mailbox	2158	2211	2431	2532	2546	2714	2663
Median Barrier	2339	2137	2378	2432	2496	2617	2340
Pedestrian	2094	2096	2064	2025	2122	2219	2155
Animal	1188	1377	1204	1504	1418	1613	2088
Fence	1625	1518	1687	1772	1734	1751	1656
Highway Traffic Sign Post	1622	1615	1700	1626	1724	1643	1517
Culvert	1232	1228	1255	1331	1324	1506	1355
Other Post	574	587	648	672	760	797	781
Pedacycle	803	711	788	723	718	758	692
Guardrail End	436	366	450	468	446	549	527
Bridge Rail	532	390	407	359	398	477	388
MV in motion - other roadway	255	314	240	189	243	364	380
Jackknife	226	303	297	297	276	254	268
Immersion	153	186	112	128	186	190	251
Bridge Pier/Abutment	219	197	186	151	163	150	151
Luminaire/Light Support	213	180	235	178	178	158	147
Railway Train	105	101	105	90	121	99	94
Fire/Explosion	79	117	99	74	68	68	72
Impact Attenuator	31	58	53	58	60	59	66
Bridge Parapet End	65	66	52	71	45	57	53
Overhead Sign Support	36	33	43	52	49	44	49
Total	309768	317851	327774	331612	342631	347652	342156

Fatal Crash Type, by Year							
Type of Crash	2000	2001	2002	2003	2004	2005	2006
Motor Vehicle in Motion	596	665	594	639	675	692	654
Tree	152	132	132	158	127	169	170
Overturn	114	129	139	120	154	137	161
Pedestrian	134	154	153	151	146	143	148
Ditch	68	59	62	52	49	56	59
Culvert	37	46	35	39	37	57	51
Embankment	57	46	40	48	48	54	46
Utility Pole	42	31	28	35	19	27	33
Guardrail Face	29	23	15	26	9	27	26
Other Non-Collision	15	8	17	14	19	18	25
Other Fixed Object	13	21	17	15	30	30	25
Curb	12	13	18	22	21	19	24
Mailbox	14	18	20	18	18	23	24
Parked Motor Vehicle	11	10	9	18	22	16	18
Pedacycle	12	21	11	15	16	21	15
Fence	5	7	3	15	7	15	13
Highway Traffic Sign Post	10	20	13	14	10	15	12
Other Post	5	1	1	6	7	6	11
Guardrail End	9	11	11	9	6	10	10
Median Barrier	12	9	8	4	5	16	7
Bridge Pier/Abutment	1	0	3	3	4	3	5
Other Object (Not Fixed)	9	8	6	9	7	7	4
Deer	3	5	7	4	4	3	4
Bridge Rail	1	1	6	4	1	6	4
Jackknife	2	0	1	6	3	0	3
Railway Train	9	13	4	6	8	6	3
Fire/Explosion	1	0	0	2	5	2	2
MV in motion - other roadway	8	20	10	7	4	9	2
Immersion	1	0	0	3	0	1	1
Impact Attenuator	2	0	1	0	0	2	1
Bridge Parapet End	0	0	2	0	1	2	1
Animal	1	0	3	5	2	0	0
Overhead Sign Support	0	1	0	2	1	2	0
Luminaire/Light Support	0	3	0	0	2	0	0
Total	1385	1475	1369	1469	1467	1594	1562